

SCULPTUREWALK 2009

Sculptures & Sites

Before & After Construction

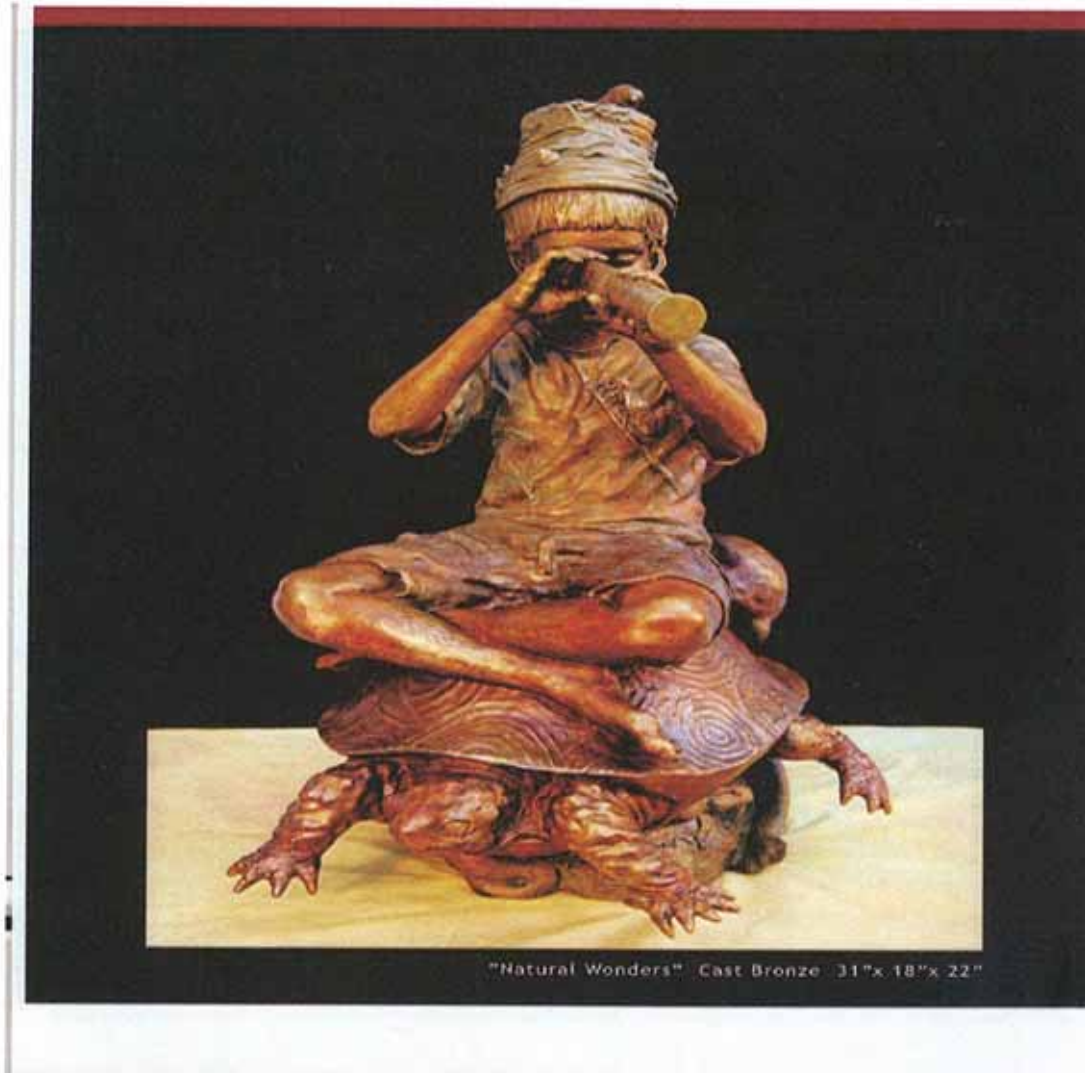
“Natural Wonders”

Dale – WI

30” H x 18” W x 22” L print – 12”Sq.

Bronze - \$9,800

1.) SW corner of 12th & Main 2.) move to Book Store



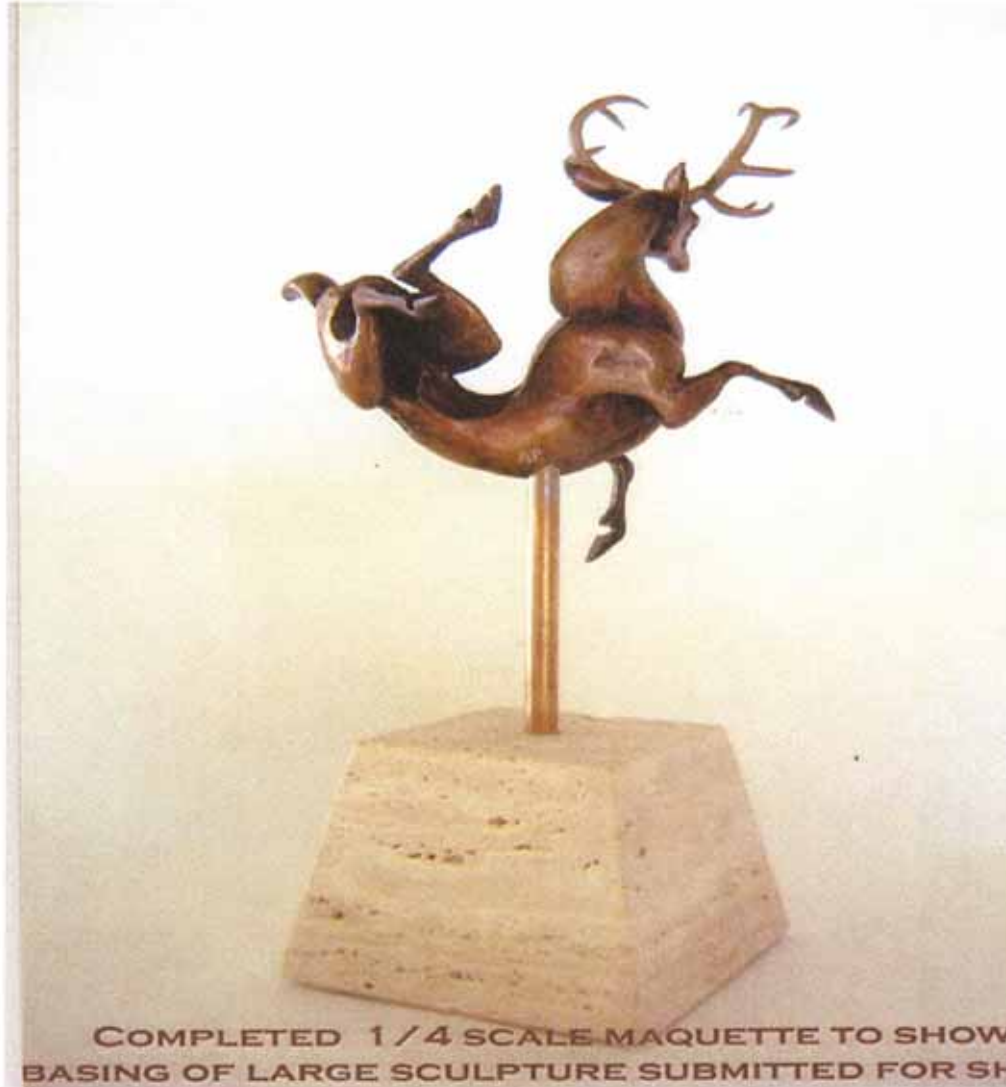
“Birth of the Sacred Stag”

Nimmo – SD

The Stag is 22”H x 20” print – 14”Sq.

L44”H x 11”W x 20

1.) on SW corner of 12th & Phillips 2.) move to Dominiques



COMPLETED 1/4 SCALE MAQUETTE TO SHOW
BASING OF LARGE SCULPTURE SUBMITTED FOR SH

“High Hopes II”

McGonagle – CO

39” H x 17” W x 17” L – print 17”Sq.

Bronze, stone base - \$7,000

1.) near Sushi Massa 2.) move to near Minerva’s



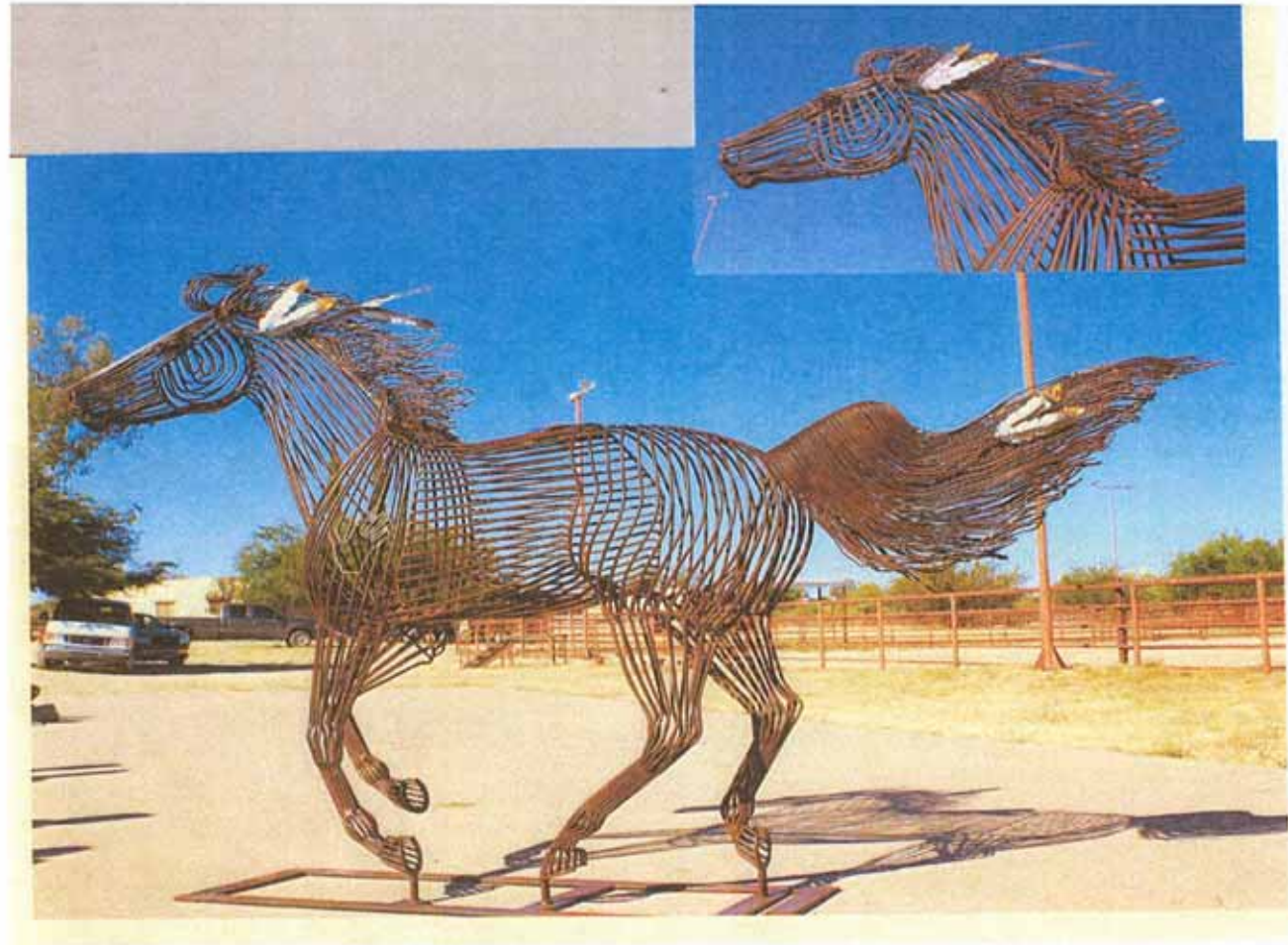
“The Buffalo Horse”

Benedict – TX

72” H x 96” L x 27” W (life size)

Steel - \$16,500

on NW corner of 13th & Phillips



“Bear Hunter”

Rick Hill – CA

21.5” H x 15.5” W x 7” L print – 10” round

Bronze - \$3,500

1.) on NW corner of 13th & Phillips 2.) move to in front of Meierhenry’s Law office



“Two Kings”

Powell – CO

7' Tall

Stainless steel, cast glass, bronze - \$8,800

1.) on SW corner of 13th & Phillips 2.) move to Prairie Star Gallery

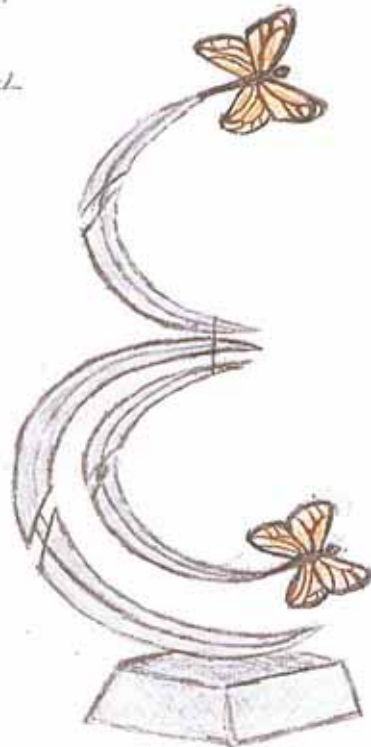
C. POWELL

“TWO KINGS” ©

1/8 2009

7' tall

STAINLESS STEEL
CAST GLASS
KINETIC



“Samuel’s Altar”

Morin – OH

66” H x 27” W x 27” L print – 26”Sq.

Granite - \$9,500

1.) in front of Kelo TV – may stay here 2.) move to SW corner of 10th & Phillips



“Gathering of the Magnificent”

Johnson – GA

56” H x 56” W x 48” D – print – 22 Sq. – pad -

Bronze - \$18,000

1.) on SE corner of 13th & Phillips 2.) move to Meierhenry’s Law Firm



“Hares to You”

Palumbo –

37” H x 13” W x 15” D

Bronze - \$4,700

on NE corner of 13th & Phillips



“Observing Grace”

Newman – ID

26 ¾” W x 21” W x 21” L

Bronze - \$6,100

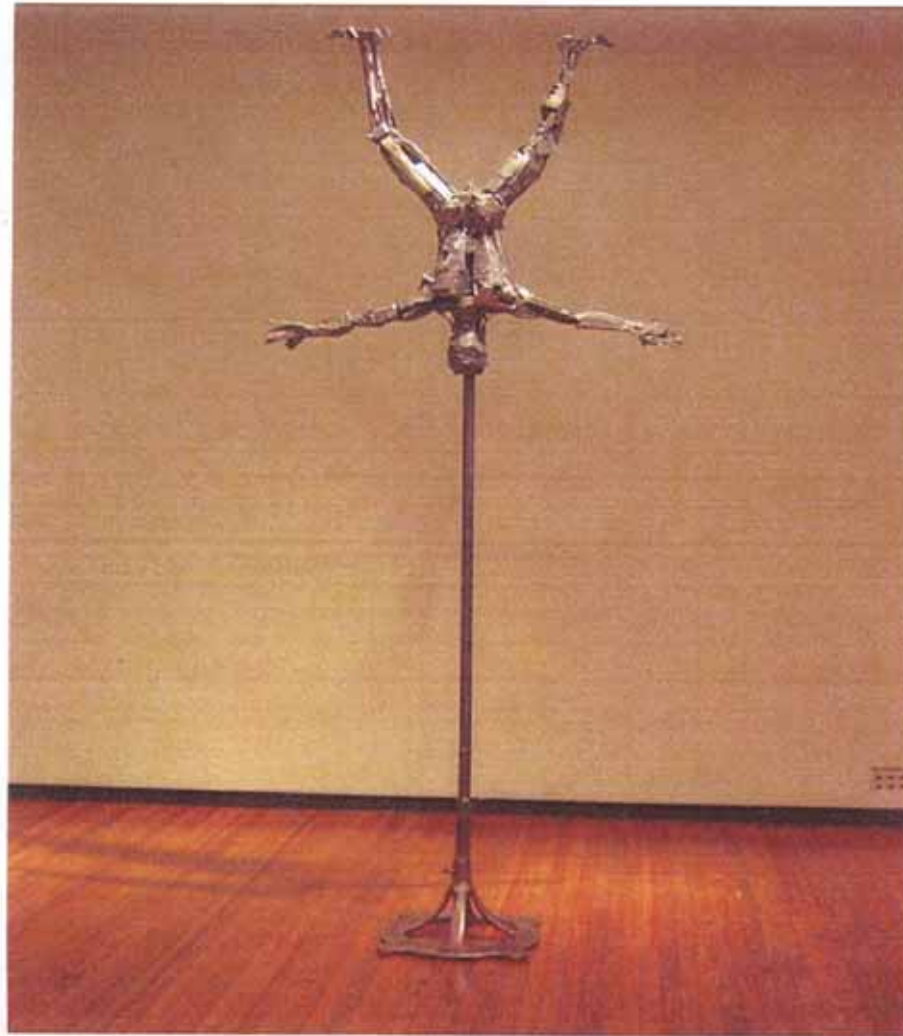
1.) in front of Federal Bldg. 2.) move to Michelle’s Coffee on Phillips



“High Five”
Peterson – CO
Life size 4-5’H
Bronze
in front of Federal Building



**“Vitruvian Man”
Parlier – NY
Sculpture 4’ H x 4’ W x 1’ L
Post is 6’H
Welded steel - \$10,000
south plaza at the Pavilion**



“For My Mom”

Jones – CO

3’4” H x 12” W x 24” L

Bronze - \$7,500

Near south door at the Pavilion



“Linear Thinking”

Benedict - Tx

Life size

Steel - \$

1.) On SW corner of 11th & Main 2.) to move to Muenster Bldg on Phillips



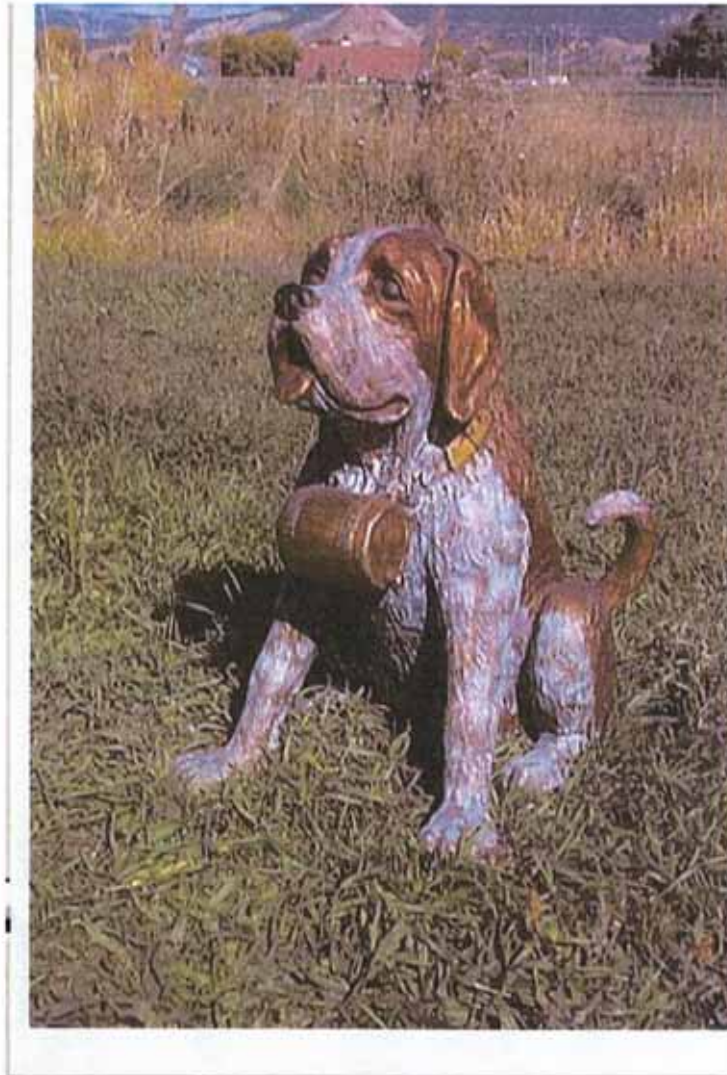
“Brandy”

Zimmerman – CO

31” H x 21” W x 40” L

Bronze - \$4,000

on SW corner of 11th & Main



“Nichole and Chipper”

Legeros – MN

3' H x 17" W x 11" L

Bronze - \$17,000

on NW corner of 11th & Main



“Comforter”

Crain – CO

36” H x 36” W x 25” L – print – 33” x 26”

Bronze - \$15,000

1.) on NE corner of 11th & Main 2.moving to Great Outdoor Store



“everything...”

Pierce – MO

85” H x 42” W x 38” L print – 34”Sq.

Steel, stainless steel - \$7,900

1.) near Home Federal driveway on Main 2.) move to SE corner of 11th & Phillips



*Artist. Nathan Pierce
Title. "everything..."
Medium. Welded steel / stainless
Dimensions. 85"x 42"x 38"
Value. 7900.00*

“How Many Kisses”

Haire – CO

60” H x 31” W x 30” L

Bronze & stainless steel - \$15,000

1.) on NW corner of 10th & Main 2.) move to State Theater



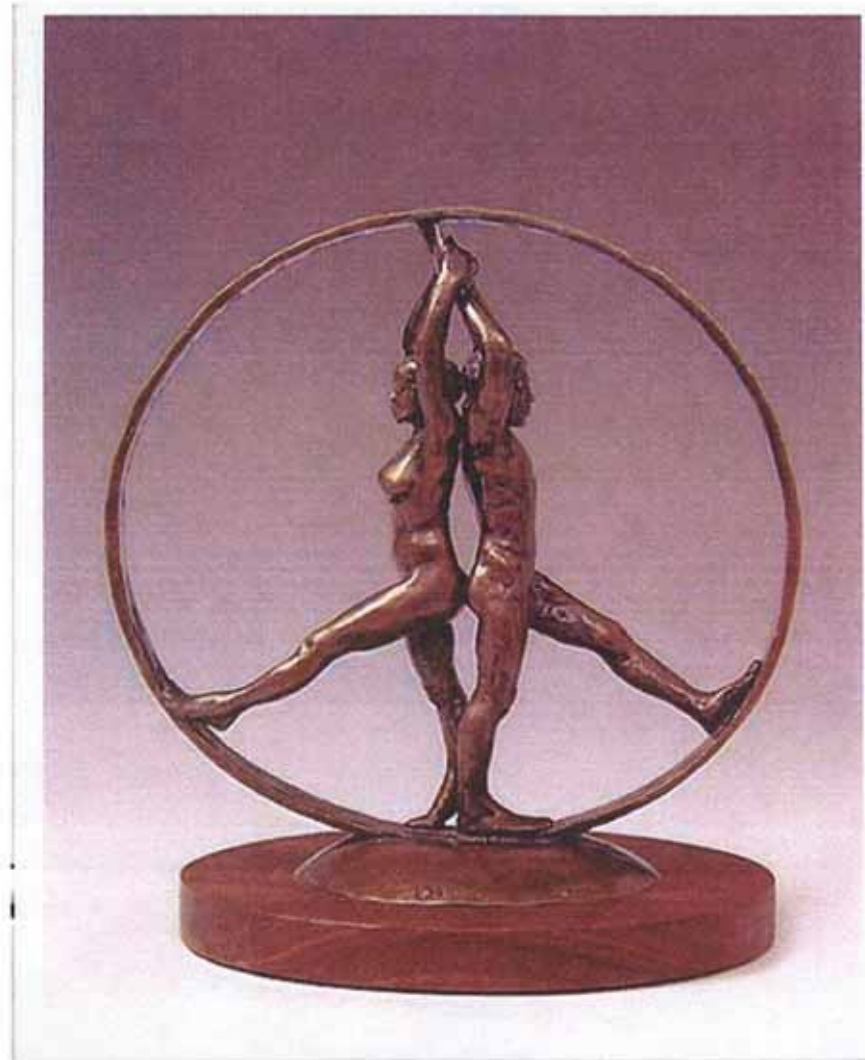
“Peace Sign”

Kleine – Canada

4' H x 4' W x 2 ½' L

Bronze - \$15,000

on NW corner of 10th & Phillips - west



“Guitarist”

Obazee – CA

42” H x 20” L x 19” W print 27” x 9”

Metal construction - \$5,600

on NW corner of 10th & Phillips - east



“Jack”

Tucker - SD

22” H x 11” W x 24” L – print 17” x 13”

Bronze - \$7,000

In planter by clock on NW corner of 10th & Phillips



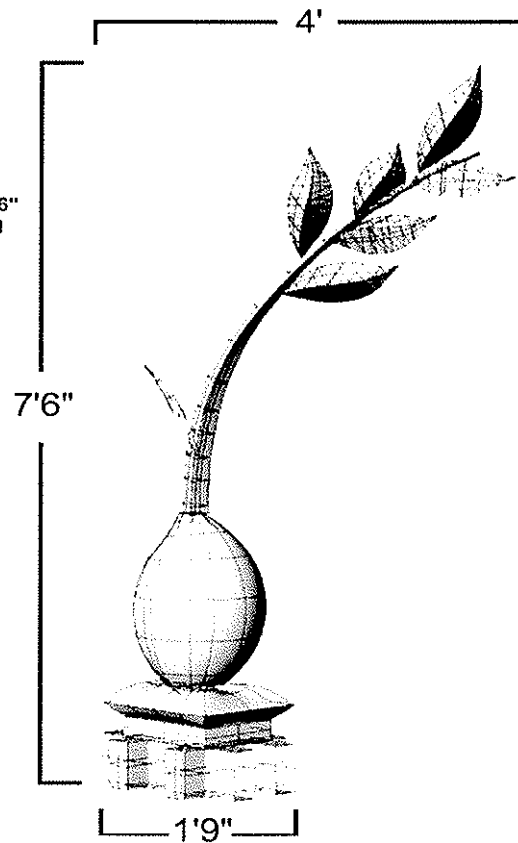
"Jack", clay for bronze by Richard Tucker

“Seedling II”

Glenn Williams – IA
7’6” H x 4’W x 1’9” L
Painted Steel - \$10,000
south of Diner

Specifications

Artist: Glenn Williams
Title: Seedling II
Dimensions: 7'6"x4'x1'6"
Materials: Painted steel



“Panda Bear & Cub”

Shelley – UT

4’9” H x 5’6” W x 5’5” L

Bronze - \$39,000

1.) near fountain in Fountain Square 2.)move with pedestal to Shriver’s corner



**“The Thought
32”H x 16”x 16”
weight is 12Kg**

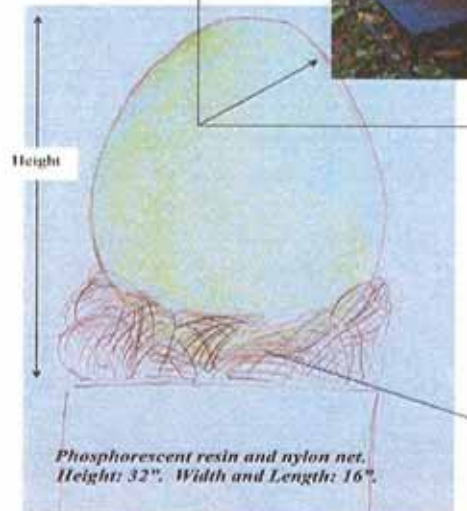
Phosphorescent resin and nylon net - \$9,000
near fountain in Fountain Square

“The Thought source”

By night ...



Side view



Front and Back view



Nylon net

“Gossip”

Ghosh – CO

28” H x 40” W x 48” L

Bronze - \$15,000

near fountain in Fountain Square



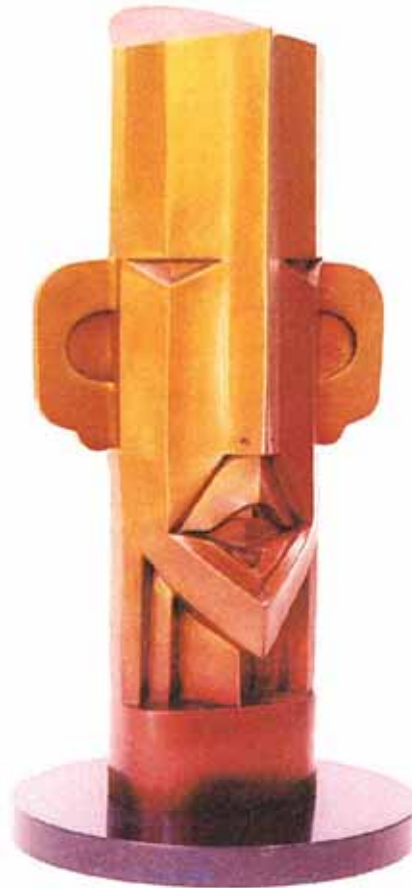
“King Tut”

Stedman – OR

24” H x 9” W x 6” D print – 10”Sq.

Bronze - \$3,090

mid-block, west side between 9th & 10th on Phillips



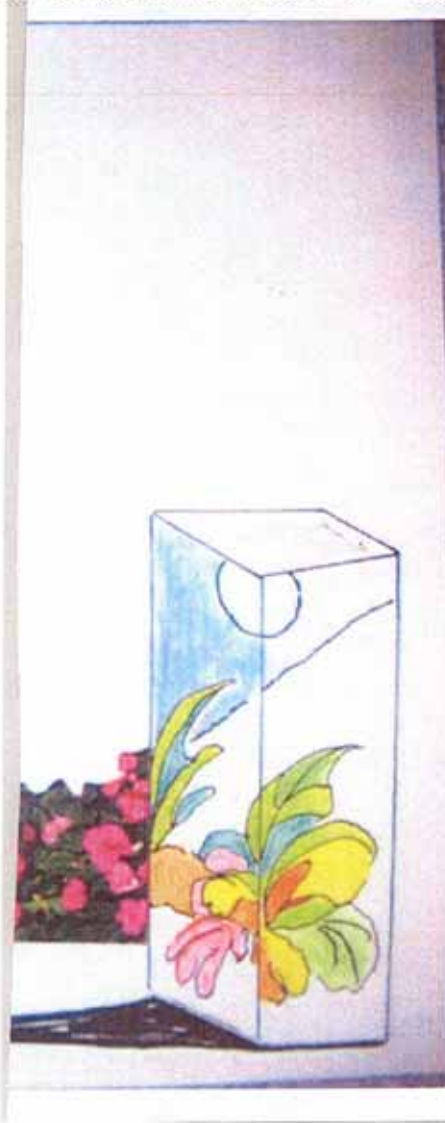
“Early Snow”

Love – MT

36” H x 12” W x 12” D – print 12” Sq.

Mosaic glass - \$4,000

mid-block on west side between 9th & 10th on Phillips



“Cassandra”

Ten Cate – SD

40” H x 18” W x 24” L

Bronze - \$3,500

mid-block, west side between 9th & 10th on Phillips



“Sojourner Truth”

Ryszard – CO

56” H x 12” W x 2” L - print 21”Sq

Granite - \$6,500

on SW corner of 9th & Phillips



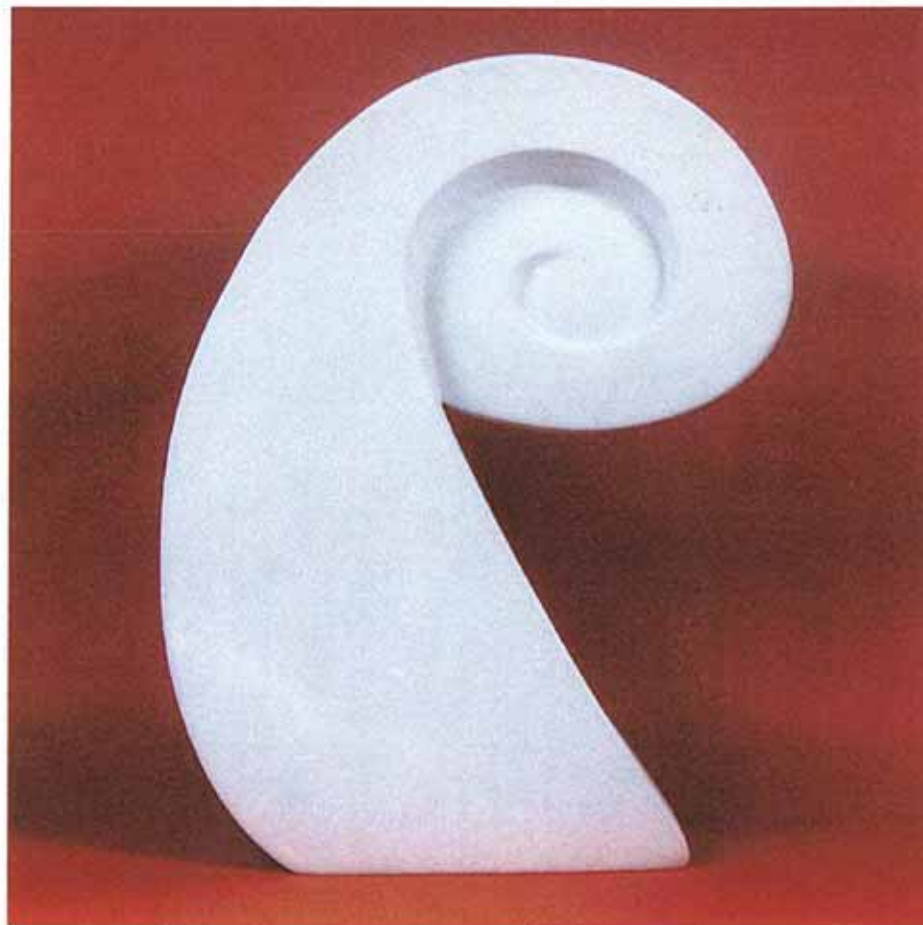
“Spiral 2”

Gordon – CA

28” H x 7” W x 15” D print 7”x11”

Marble - \$7,500

mid-block between 10th & 11th on Main



Spiral 2 - Kitty Gordon
Front View (same as back)

“In High Places”

Geolfos – CO

34” H x 14” W x 13” L

Bronze - \$5,000

on NW corner of 9th & Main in front of First Financial Bank



“Double Dancer”

Sohocki – CO

63” H x 20” W x 3” print – 4” circle

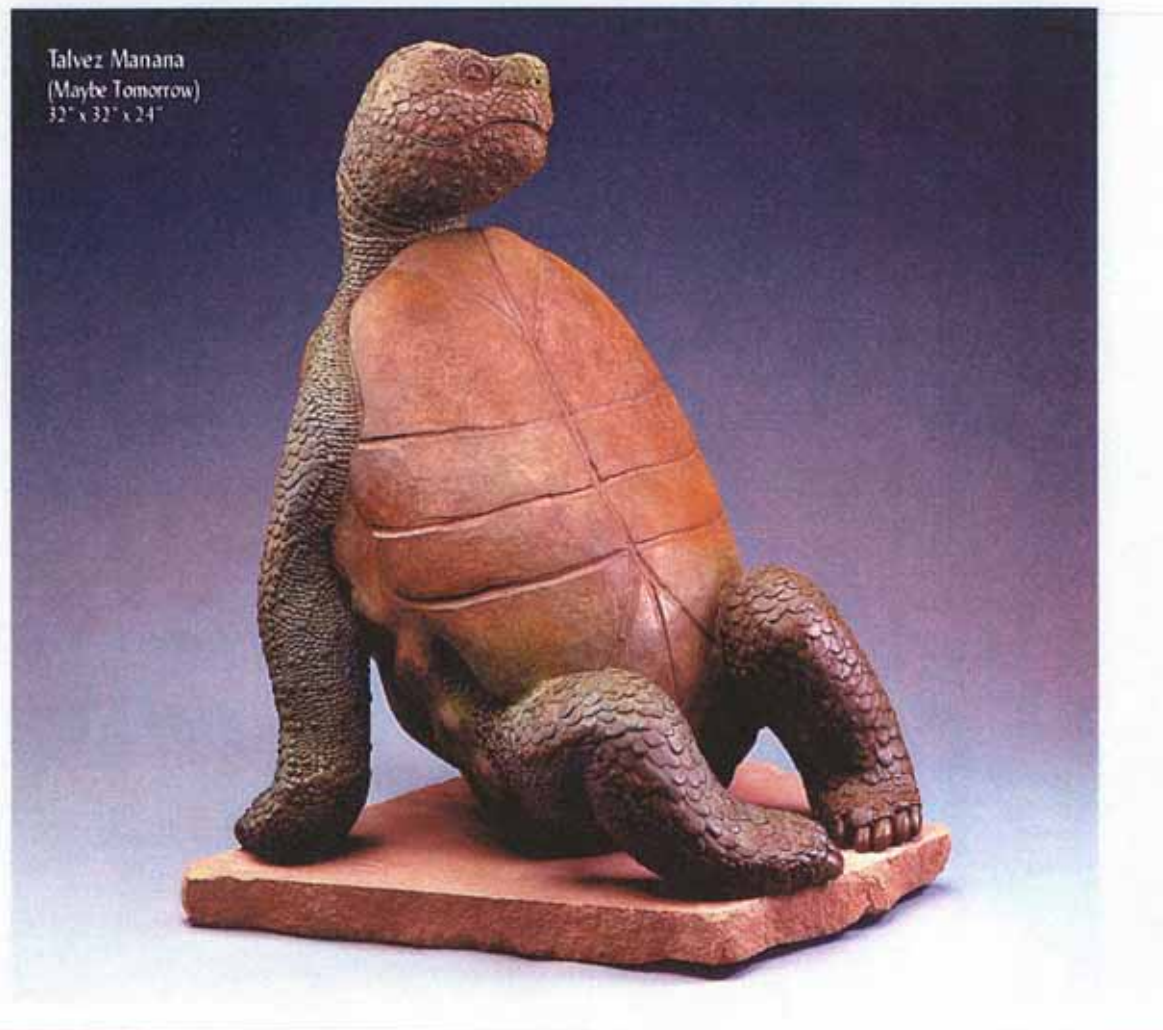
Bronze - \$12,800

in front of Wells Fargo Bank



Double Dancer

“Talvez Manana”
(Maybe Tomorrow)
Park – AZ
32” H x 32” W x 24” L
Bronze - \$11,500
in front of Wells Fargo - east



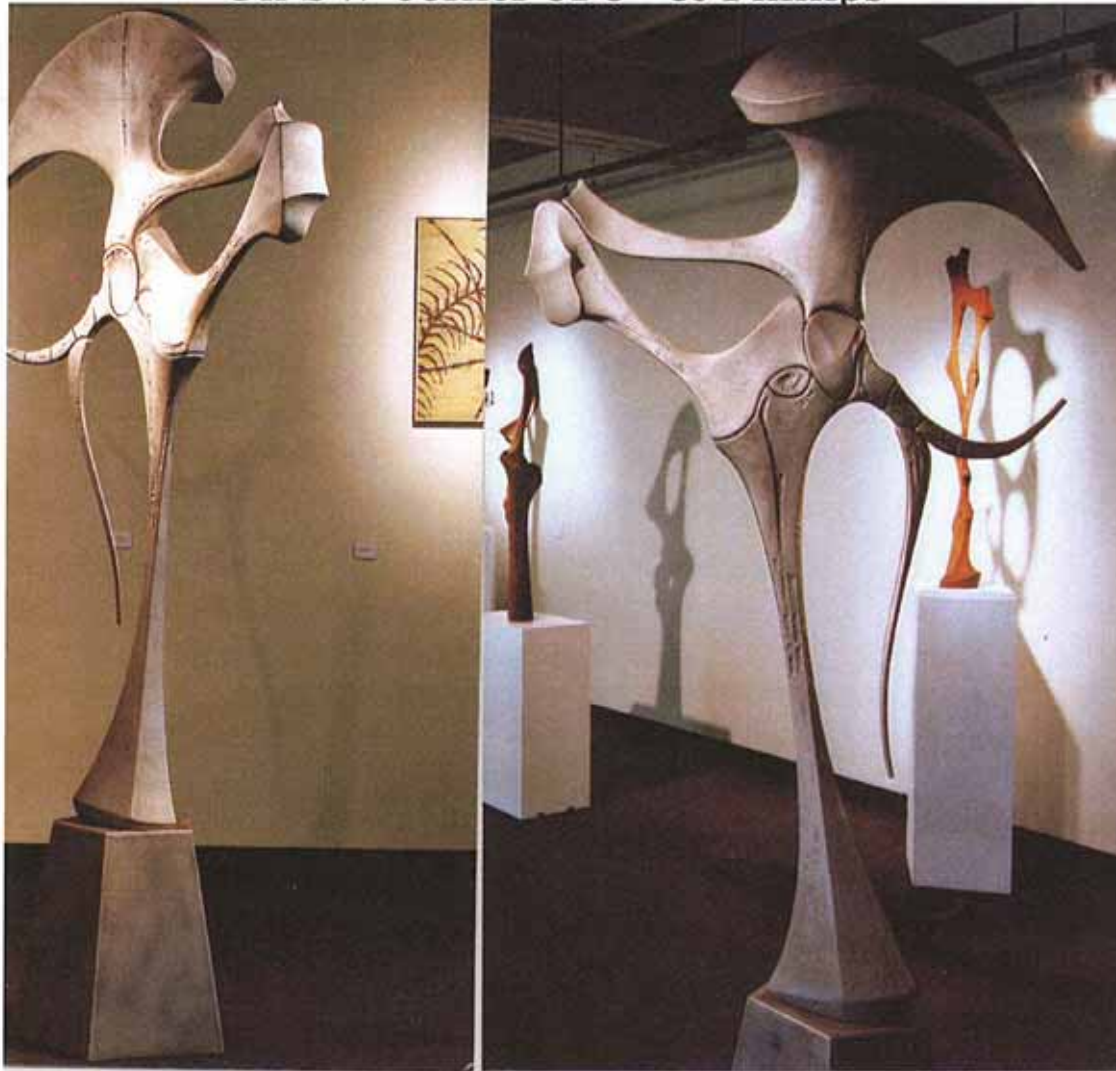
“Nighthawk”

Spiczka – MN

94” H x 50” Wx 16” L print – 24”Sq. ped – wants 10”

Cor-Ten steel - \$14,500

On SW corner of 8th & Phillips



“Setting Free”

Crain – CO

37” H x 13” W x 21” L – print – 18” x 9”

Bronze - \$8,600

in front of US Bank at 8th & Main



“Seedling III”

Glenn Williams – IA

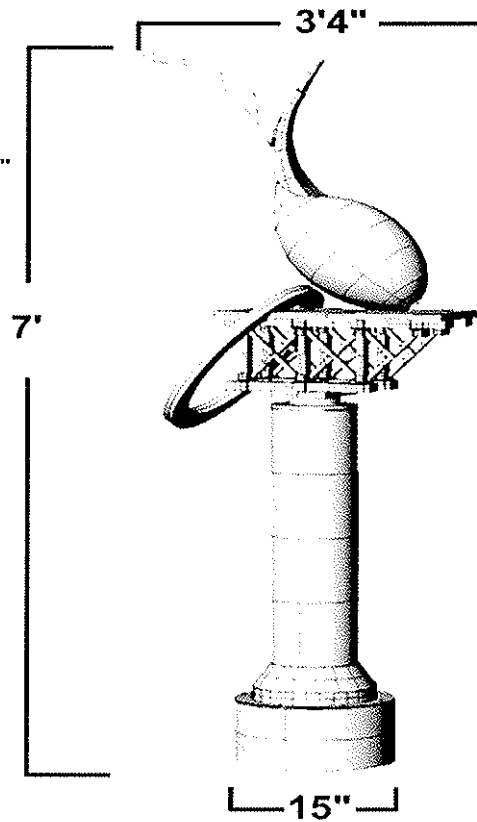
7' H x 3'4" W x 2'6" L

Painted Steel - \$10,000

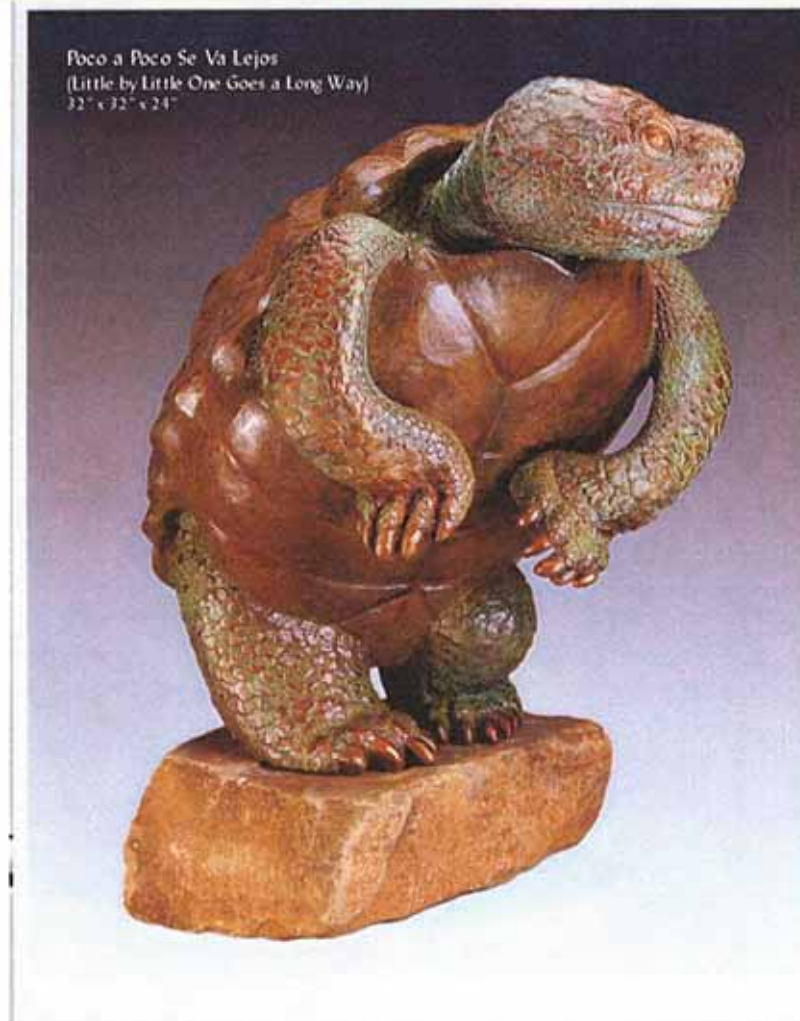
on NE corner of 8th & Phillips in front of Commerce Bldg.

Specifications

Artist: Glenn Williams
Title: Seedling III
Dimensions: 7'6" x 3'4" x 2'6"
Materials: Painted Steel



“Poco a Poco”
(Little by Little we go a long way)
Park – AZ
32” H x 32” W x 24” L
Bronze - \$11,500
in front of Crane Bldg. on 8th St.



“Sky-Wrighting”

Fokken - MN

12' H x 6' W x 2' D

Steel, cement (base) copper inset
on SW corner of 8th & Reid – 8th & RR Center



Front of model

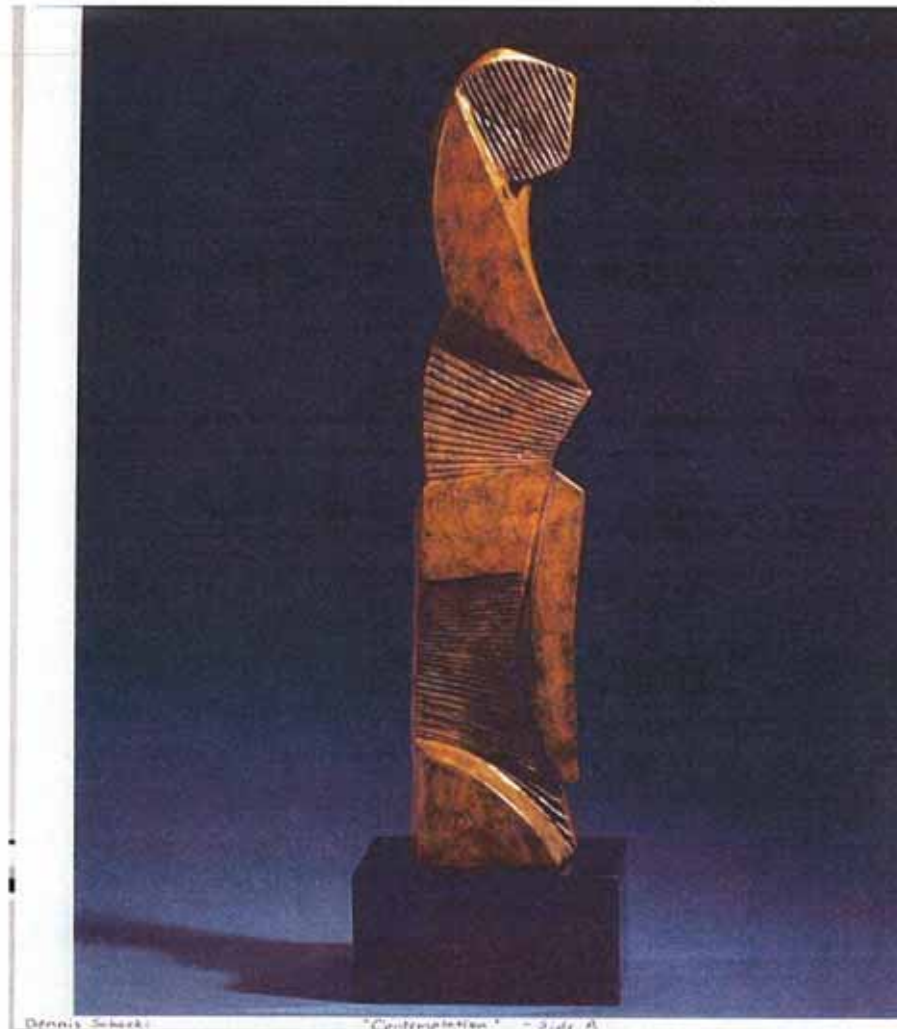
“Contemplation”

Sohocki – CO

32” H x 7” W x 5” D print 8”Sq.

Bronze - \$4,400

on SE corner of 8th & Phillips



Dennis Sohocki

"Contemplation" - July, A

“Summer’s Distractions 2”

Leuning & Treeby – SD

48” H x 22” W x 40 “ L

Bronze - \$15,000

on SE corner of 9th & Phillips



“Catamount”

Geolfos – CO

76” H x 36” W x 40” L

Marble - \$30,000

in front of First National Bank



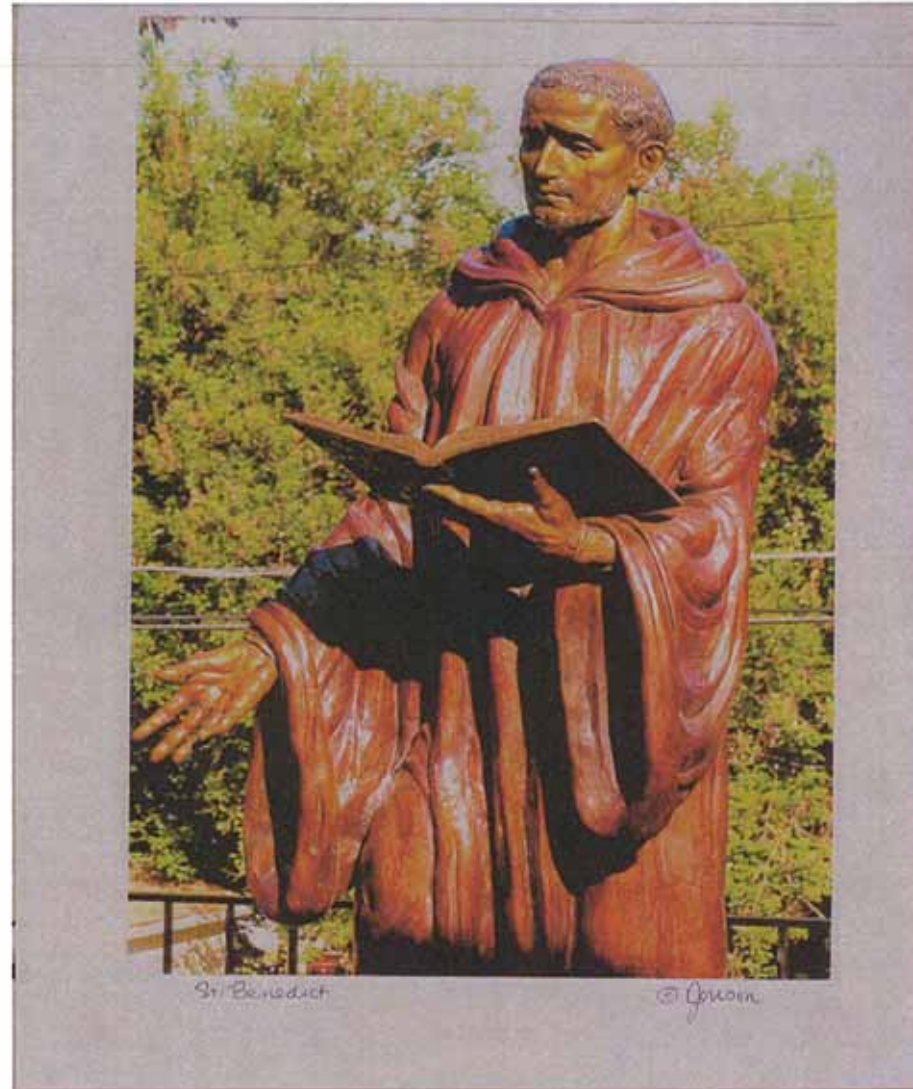
“Saint Benedict”

Jonson – NE

5’7” H x 20” W x 20” L – print 23”Sq.

Bronze - \$29,000

1.) near First National Bank 2.) move to SE corner of 10th & Phillips



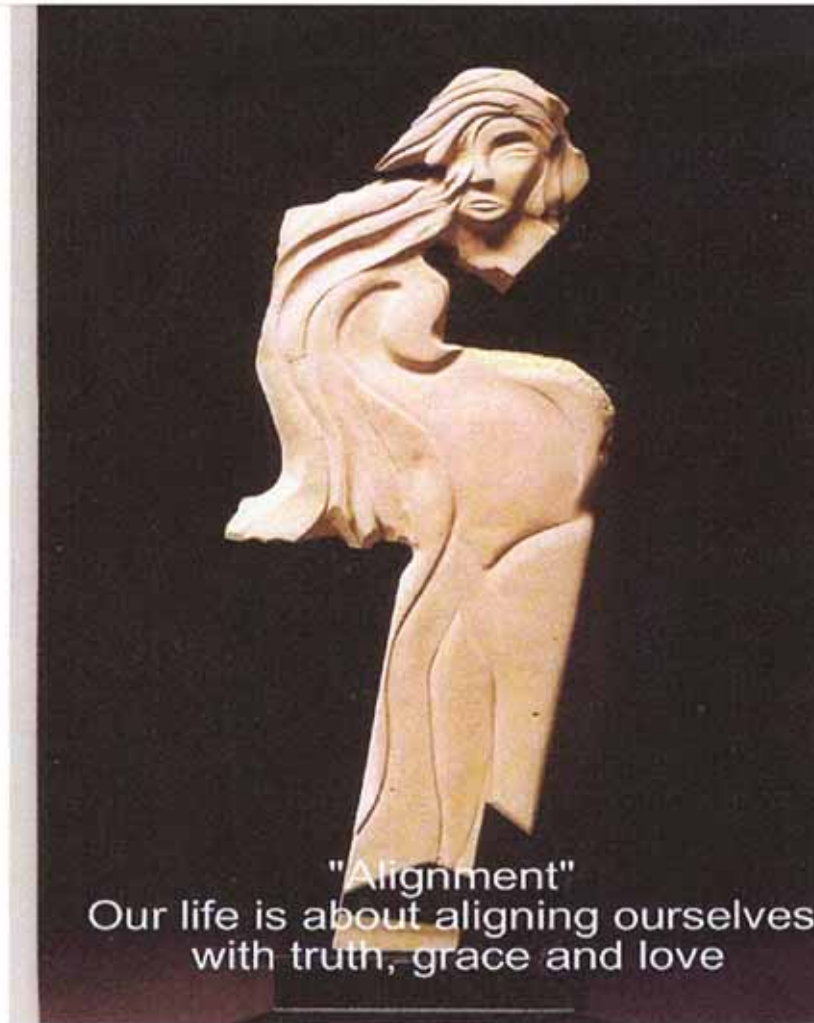
“Alignment”

Ryszard – CO

57” H x 20” W x 4” L – print 21”x 11”

Limestone - \$5,500

in front of First Financial



"Alignment"

Our life is about aligning ourselves
with truth, grace and love

“Iron Fish”

Bruce – SD

6' L x 36" H x 20"W

Steel - \$3,000

in large planter in front of First Financial



“Rock Ant Roll”

Belleveau – MN

24” H x 16” W x 16” D print – 16”Sq.

Steel & stone - \$2,000

in planter by First Financial



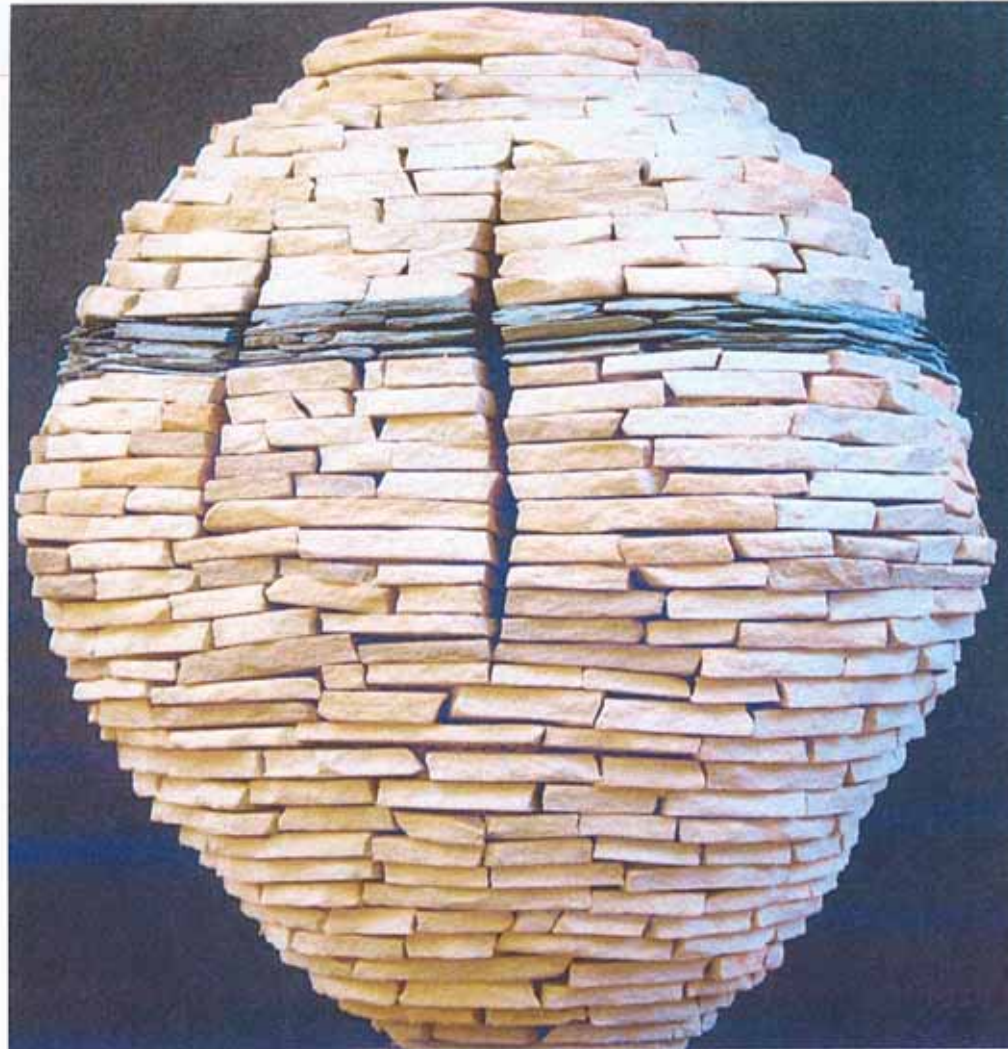
“Dividing Mantle”

Herzog - SC

21 ½ “ H x 13” W x 13” L

Slate & recycled roofing slate - \$3,000

mid-block, east side between 9th & 10th on Phillips



“After the Bath”

Hammond – UT

20” H x 10” W x 18” L – print 20”x11” pad -

Bronze - \$5,750

mid-block, east side between 9th & 10th on Phillips



“Sunday Afternoon”

Clements – CO

27” H x 22” W x 26” L – print – 25”x 21” ped – wants 3’H ped

Bronze - \$5,500

1.) mid-block, east side between 9th & 10th in front of Skellys 2.) move to Rehfelds



“Interloctangles”

Badger – WV

37” W x 34” H x 34” L – print – 11”Sq.

Welded steel - \$7,600

on NE corner of 10th & Phillips

Sculpture Images

LEE W. BADGER

Interloctangles

Welded steel, 37 x 34 x 34 in. (H x W x D)
(dimensions include 11 in. diameter steel base)



(Please Note: These are not final images, the sculpture was not finished when the pictures were taken on November 11, 2008. Work is continuing to clean and refine the welds and joints, and to polish the metal surface in preparation for final coatings. It will be finished with an automotive clear coat or high gloss clear powder coat enamel.)

Alternates

Sioux Empire Arts Council
Youth Sculpture

“Above Current”
Pierce – MO
96” H x 39” W x 18” L
Steel, stone - \$6,200

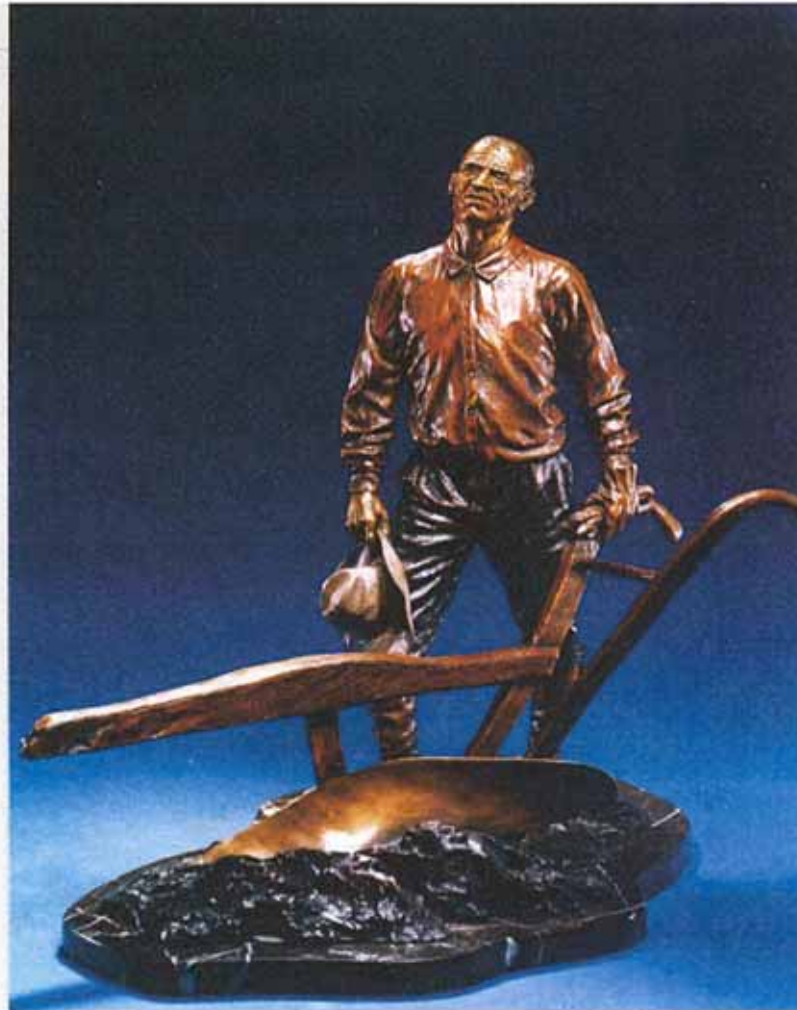


*Artist. Nathan Pierce
Title. "Above Current"
Medium. Welded steel
Dimensions. 96"x 39"x 18"
Value. 6200.00*

“Rival Readers”
Johnson - GA
56”H x 25” W x 23” D
Bronze - \$15,000



“The Plowman”
Clements – CO
19” H x 12” W x 18” L
Bronze - \$3,200



“Monolith Mantra”
Walker – WI
8’5”H x 38”W x 30”D
Aluminum, stainless steel - \$



“Gigantic Pink Flamingo”

Powell – CO

12’ Tall

Polyester resin, steel - \$6,500



“Mello Cello”
Jack Hill – IA
68” H x 32” W x 18”L
Bronze - \$21,000



“A Sudden Gale”

Birch – MN

44 ½” H x 13” W x 13” L

Bronze - \$5,000



“Contemplating Bull”

Palumbo

34” H x 26” W x 18” D

Bronze - \$6,800

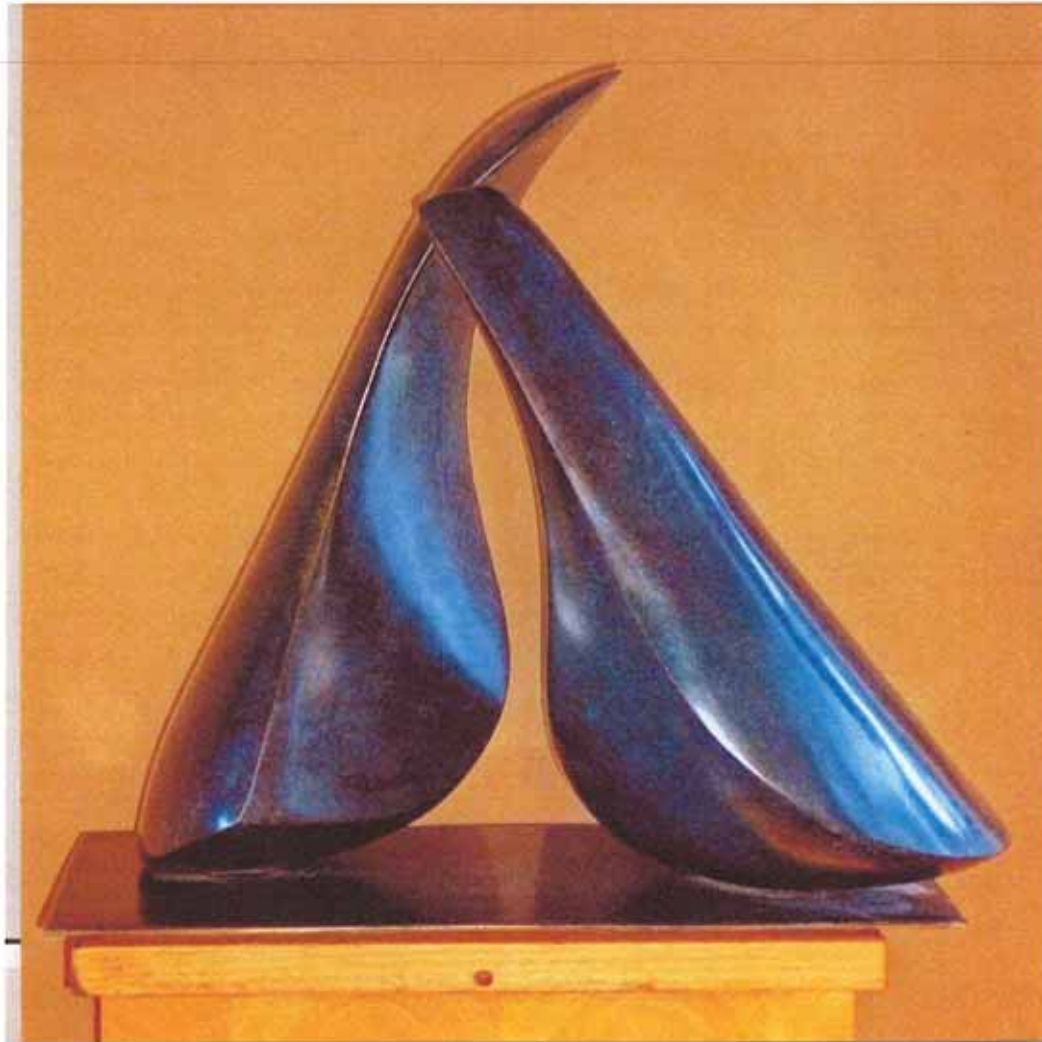


“Relationship Series V”

Castle – ID

27” H x 14” W x 16” L

Bronze - \$8,000



“Rock Hound”

Belleveau – MN

18” H x 12” W x 16” D

Steel & stone - \$2,000

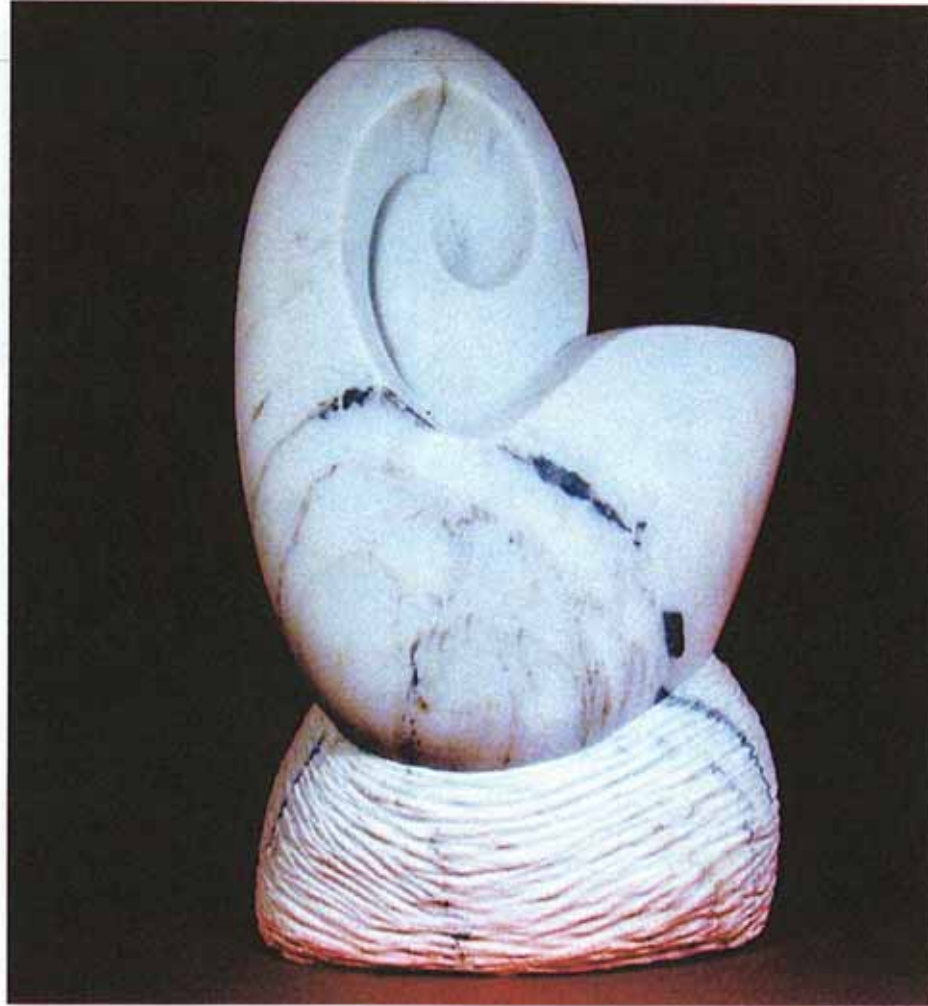


“Spiral 1”

Gordon – CA

22” H x 22” W x 12” D

Marble - \$9,000



Spiral 1 - Kitty Gordon
Front view

“A Little More to the Left”

Geissler – NY

19” H x 29 ½” W x 14” D

Bronze - \$5,900

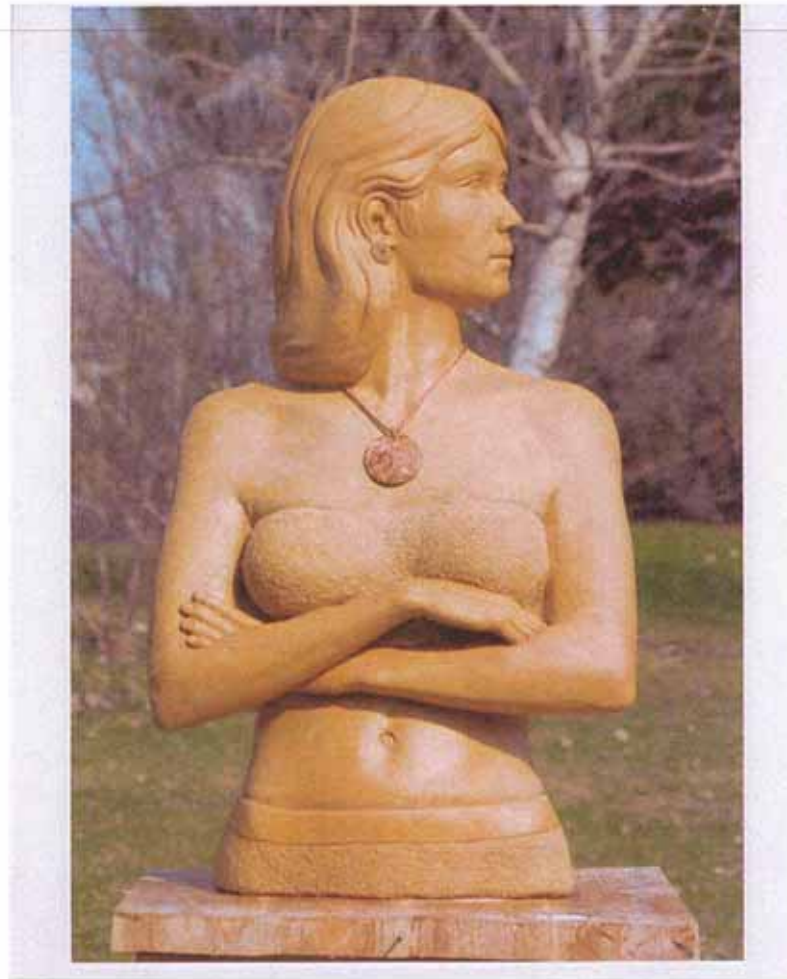


“Girl with Necklace”

Birch – MN

34” H x 18” W x 12” L

Limestone w/marble necklace - \$5,000



“Lookin’ for lunch”
Stedman – OR
4’ H x 12” W x 12” D
Bronze - \$5,590



SCULPTUREWALK

The End